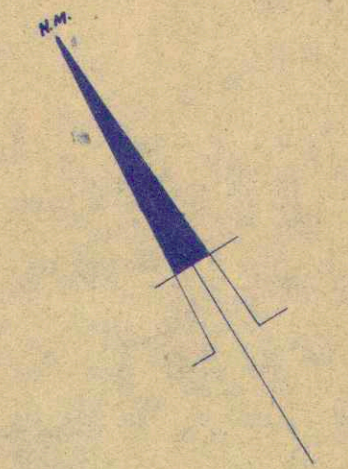
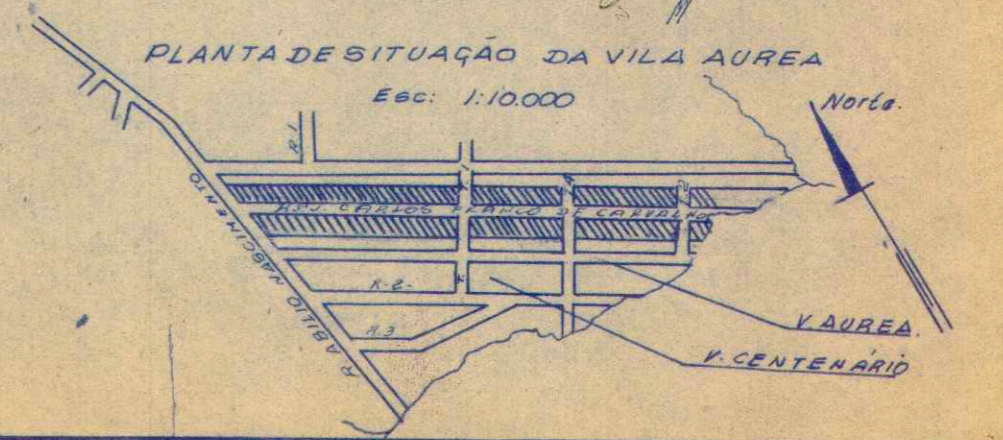
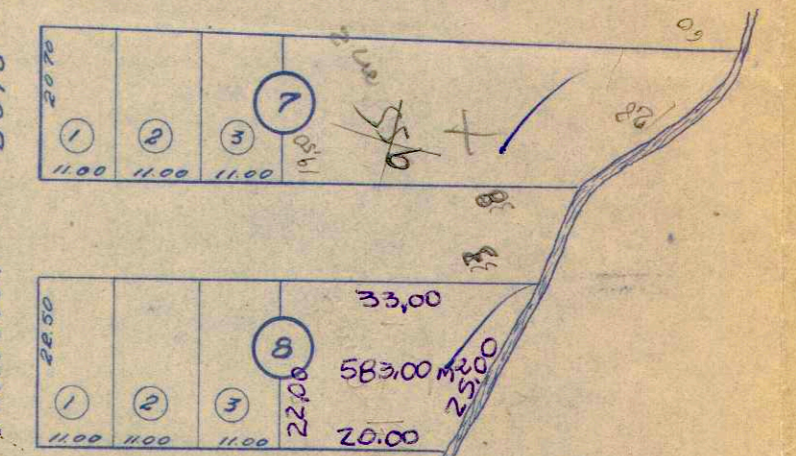


$$8 - \frac{33+20}{2} \cdot 22,00 = 583,00$$

$$7 - \frac{60+38}{2} \cdot 19,50 = 955,50$$



D. O. V. Prefeitura Municipal de Presidente Prudente		Desenho No. 32
Projeto: COPIA FIEL DA PLANTA DA VILA AUREA		Escala 1:10.000
ENGENHEIRO	DESENHISTA	Data 11