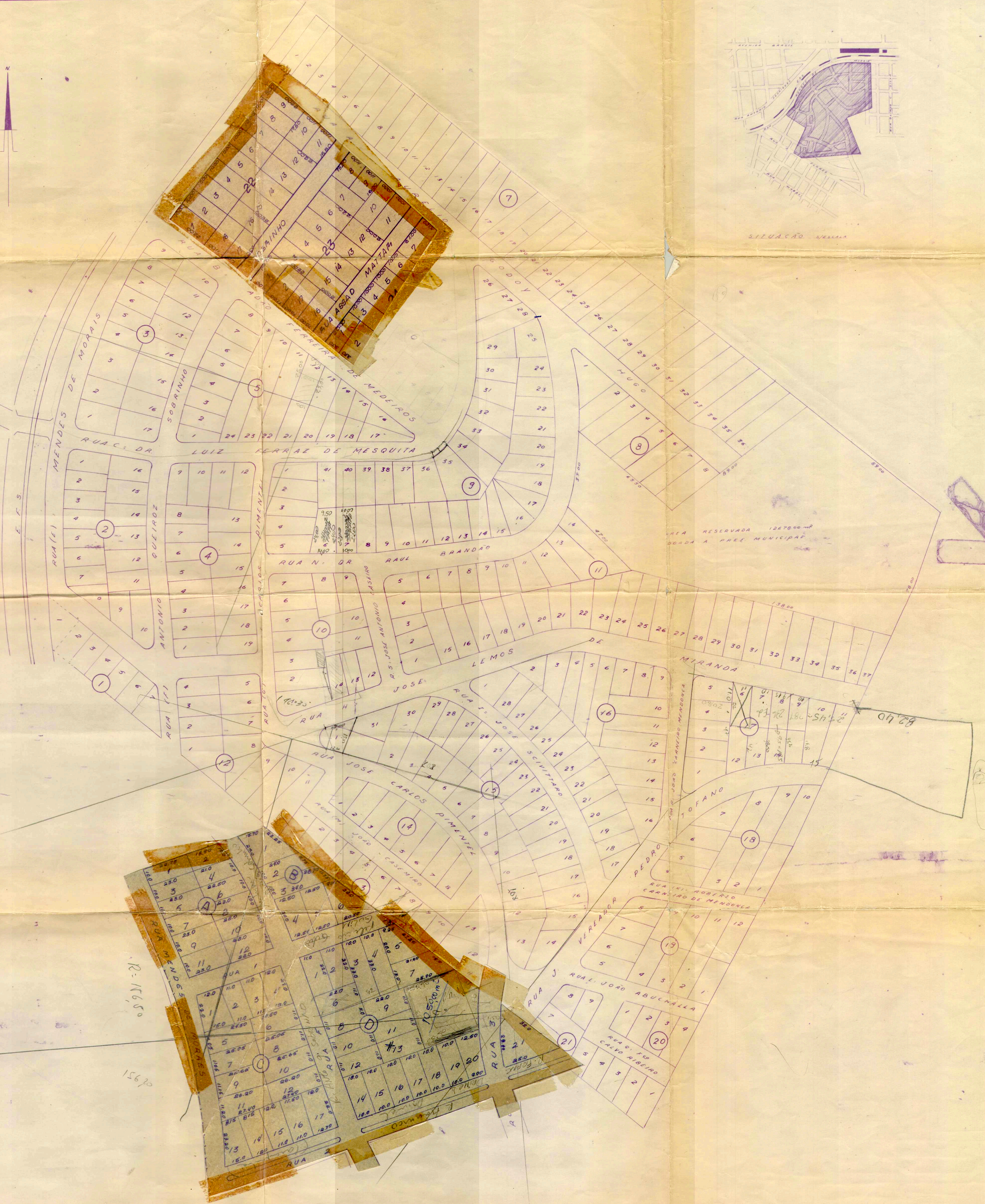


AV. BRASIL



ÁREA RESERVADA 1267000-8  
DEBIDA A PARE MUNICIPAL



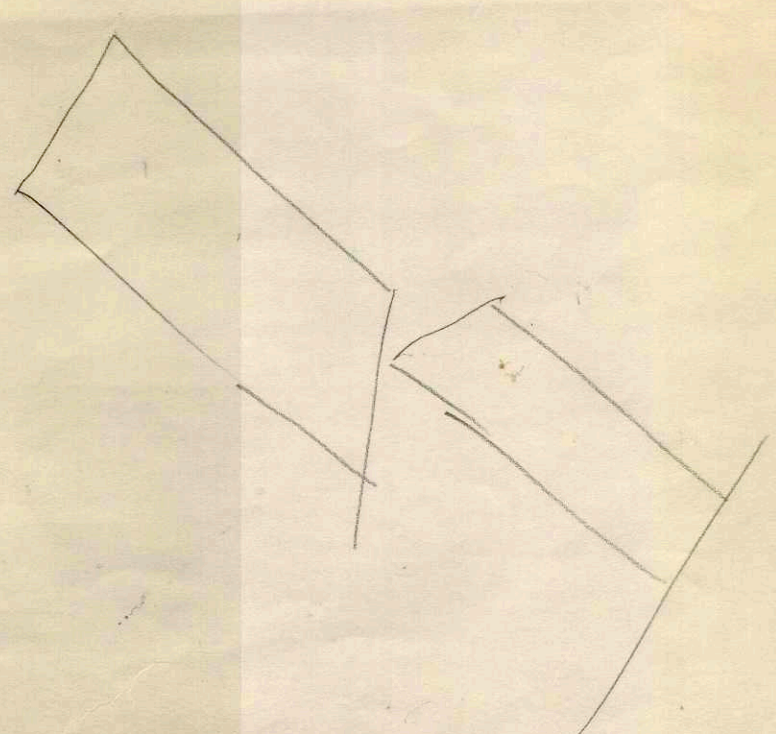
0.6373

R = 1650

15670

Tg = 10800  
R = 15113 m

NC = 65° 00' 00"  
1/2 34° 30' 00"



D. O. V.		Direção No
Prefeitura Municipal de Presidente Prudente		312
Projeto: PLANTA DA VILA BRASIL		Escala: 1:1000
PREFEITO	ENGENHEIRO	DATA: 25.5.66
FABIO MOREL		DESENHISTA